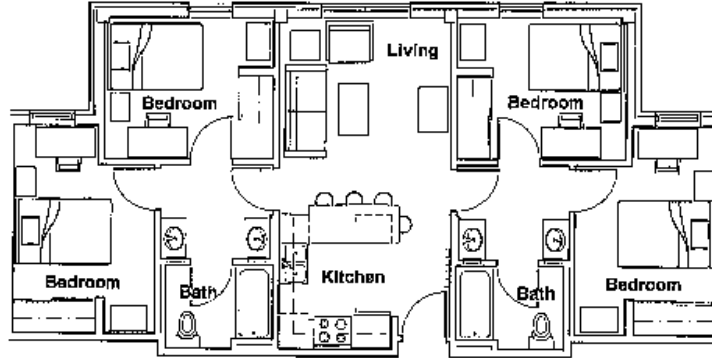


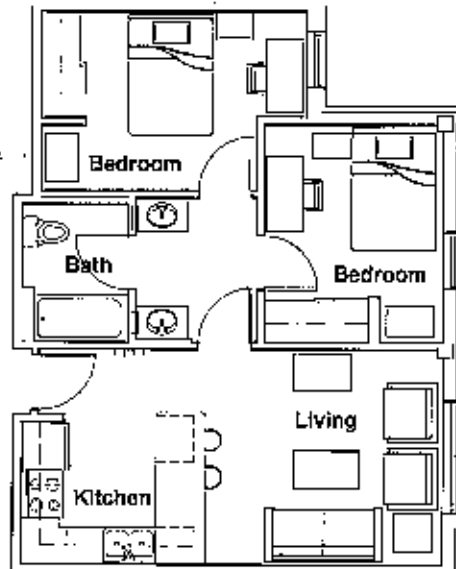
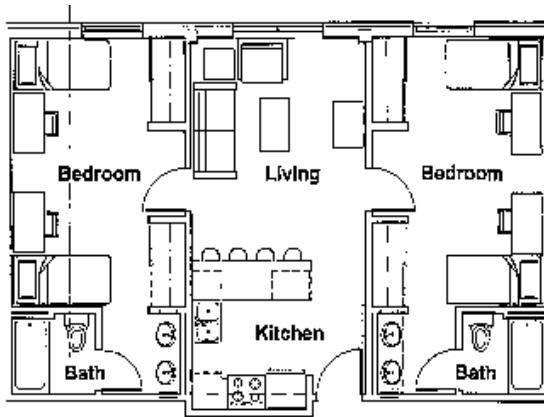
**GSBC HOUSING, BEAR CREEK APARTMENT LAYOUTS**

*\*Housing preferences are accepted in late spring and assigned based on class year and date of request.*

**Four Bedroom / Two Bath Apartment** - Includes a private bedroom & shared bathroom with one other student.



**Two Bedroom (Private Bedroom) Apartments** - Includes a private bedroom and a private OR a shared bathroom.



**One Bedroom / One Bath Apartment (Limited Availability)** - Includes a private bedroom and a private bathroom.

